

Diaper Bag Pattern



Suggested Fabrics:

Denim, twill or sportswear

This pattern uses about 3/4 yard of fabric 60" wide

This pattern looks long but is actually fairly straight-forward to make. It takes longer than most of the other patterns on this web site, but we need a lot of these every month!

To begin, cut a square 24" long x 24" wide and a rectangle 24" long x 36" wide. (This is designed to use a 24" piece of fabric 60" wide, if the fabric is 54 or 55" wide, you can adjust the width of the rectangle accordingly, but keep the length of the square and the rectangle the same size.)

Finish or serge the short ends of the rectangle and two opposite sides of the square, then turn under 1/2" and topstitch about 1/4" to 3/8" from the folded edge.

Straps can be made using webbing, or sewn from the same fabric as the bag. To make straps, cut two 2 1/2" to 3" strips of fabric across the width of the fabric. Sew the short ends together forming a large loop. Finish and turn under 1/4" on both long sides of the strip. Fold in half lengthwise, and topstitch along both sides. If you are using purchased webbing for straps, you can cut the strap about 3 to 4 yards long, according to your preference.



Center the square on top of the rectangle, with right sides of both fabrics facing up. Stitch across the center of both pieces, sewing the square and rectangle together across the width of the bag. This will be the bottom center of the bag. Next, lay the handle straps over the right side of the fabric, forming a large oval, as shown. Make sure both straps are the same distance from the center of the bag. Place the strap seams at the bottom center of the bag.

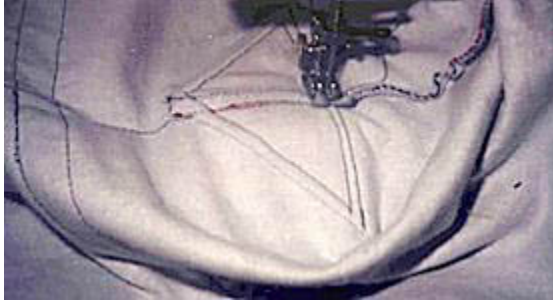


Sew around the edge on both sides of the strap. This will also form the side pockets of the bag. Reinforce the straps at the edge of the bag, by sewing a large square with an "X" across the center.

Fold the bag with right sides together and sew the side seams. Keep bag turned inside out for next step.

Fold the bag with the side seam laying on top of the center bottom seam of the bag, forming a triangle. Stitch across the base of the triangle, about 2 1/2" from the tip. This will shape the depth of the bag.





Fold the triangle towards the bottom of the bag, and top stitch in place around the edges of the folded triangle. Turn the bag right side out and you are finished! Mix and match fabrics or change the directions of stripes to make an attractive bag.